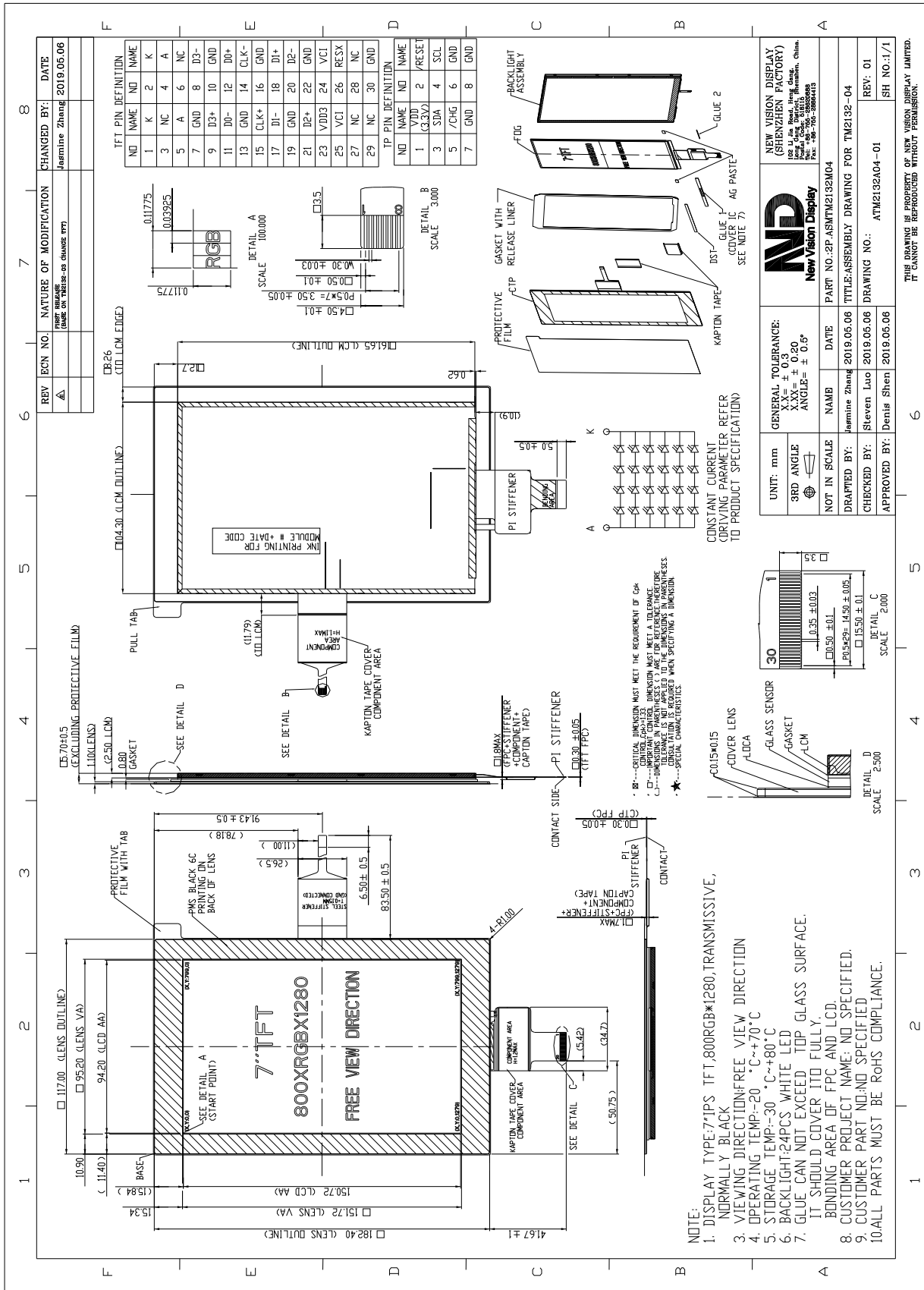


**TFT PRODUCT SPECIFICATIONS****800RGB x 1280****16.7M Colors****7.0" Diagonal**

Part Number	TM2132S070L-04
Overall Dimensions	117.00(H) x 182.40(V) x5.7(T)mm
Active Area	94.20 (H) x 150.72 (V)mm
Resolution	800 RGB (H) x 1280 (V)
Pixel Size	0.11775 (H) x0.11775 (V)mm
Display Colors	16.7M
Display Mode	IPS/Transmissive /Normally Black
LCD Type	a-Si TFT
Contrast Ratio	850:1 (Typ)
Viewing Angles (CR≥10)	89°/89°/89°/89° (Left/Right/Top/Bottom)
View Direction	Viewing angle free
Brightness (I=100mA)	420cd/m <sup>2</sup> (TYP.)
NTSC	50%
Driver IC	JD9366
VDD	3.0~3.6V
Interface	4-lane MIPI DSI
Backlight System	24 White LED ,4 in series ,6 in Parallel
Forward Voltage	12.8V(typ)
Forward Current	120mA (typ)
<b>Touch Panel Parameter</b>	
Input Method	Bare or gloved finger or thick conductive stylus
Number of simultaneous touches	5 point
Min. spacing between 2 touches	18mm
Positional Accuracy	+/- 1.5 at center, +/- 2.5 at edge
Minimum Touch Area	30mm <sup>2</sup>
Minimum Touch Pressure	0N
Number of touches	>10 million over lifetime
Connection Type	ZIF Connector
Anti-glare surface	No
Optical Transmittance	>85%
Non-Linearity	≦ 3.0%
RoHS Compliance	Yes
Contact Resistance	>20Mohm @ DC25V
Power Consumption	50mW
Interface to Host	I2C
Response Time/Speed	15ms
I2C Address	0X4A
Touch controller	ATMXT224T-MAU
ESD Capability	15KV Air discharge (TP with lens) 8KV contact discharge(TP with lens)
Operating Voltage	3.3V

The information contained herein is based upon typical data, New Vision Display makes no warranties expressed or implied as to its accuracy and assumes no liability arising out of its use by others. The user should determine suitability of New Vision Displays for each individual application.



The information contained herein is based upon typical data, New Vision Display makes no warranties expressed or implied as to its accuracy and assumes no liability arising out of its use by others. The user should determine suitability of New Vision Displays for each individual application.