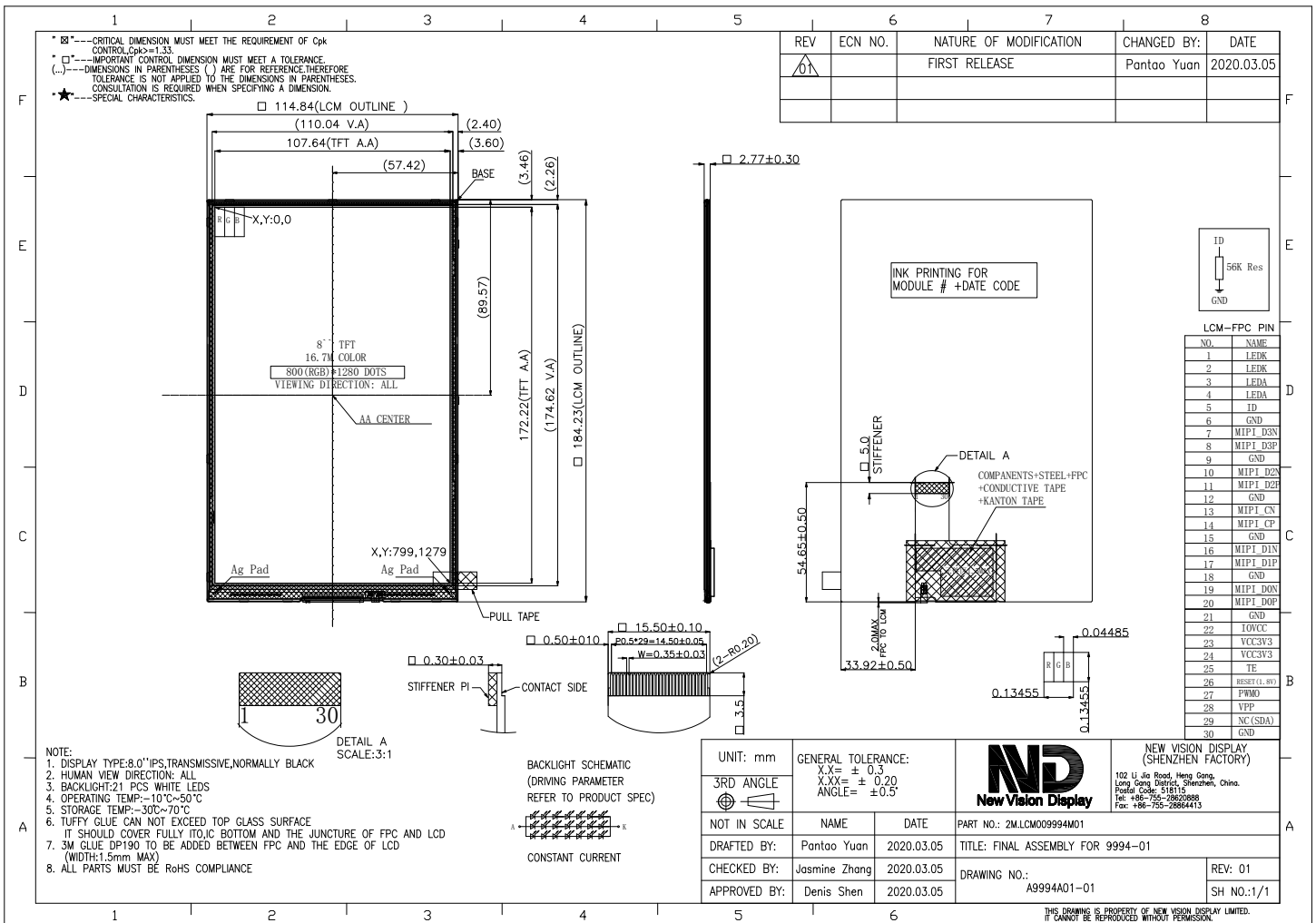


Part Number	1M.NVDS-9994DPOP080H-01
Overall Dimensions	114.84(H)x184.23(V)x2.77(T)
Active Area	107.64 (H) x 172.22 (V) mm
Resolution	800 RGB (H) x 1280 (V) Stripe
Pixel Size	0.13455 x 0.13455mm
Display Colors	16.7M
Display Mode	IPS, Transmissive, Normally Black
LCD Type	a-Si TFT
Contrast Ratio	1000(typ)
Viewing Angles (CR≥10)	80°/80°/80°/80° (Left/Right/Top/Bottom)
View Direction	ALL
Grayscale Reversion	-
Brightness (I=60mA)	340 cd/m2 (typ)
NTSC	60%
Driver IC	JD9365DA
VDD	3.3V(typ)
Interface	MIPI 4-Data Lane
Backlight System	21 White LEDS
Forward Voltage(BL)	22.4V(typ)
Forward Current(BL)	60mA (typ)



The information contained herein is based upon typical data, New Vision Display makes no warranties expressed or implied as to its accuracy and assumes no liability arising out of its use by others. The user should determine suitability of New Vision Displays for each individual application.