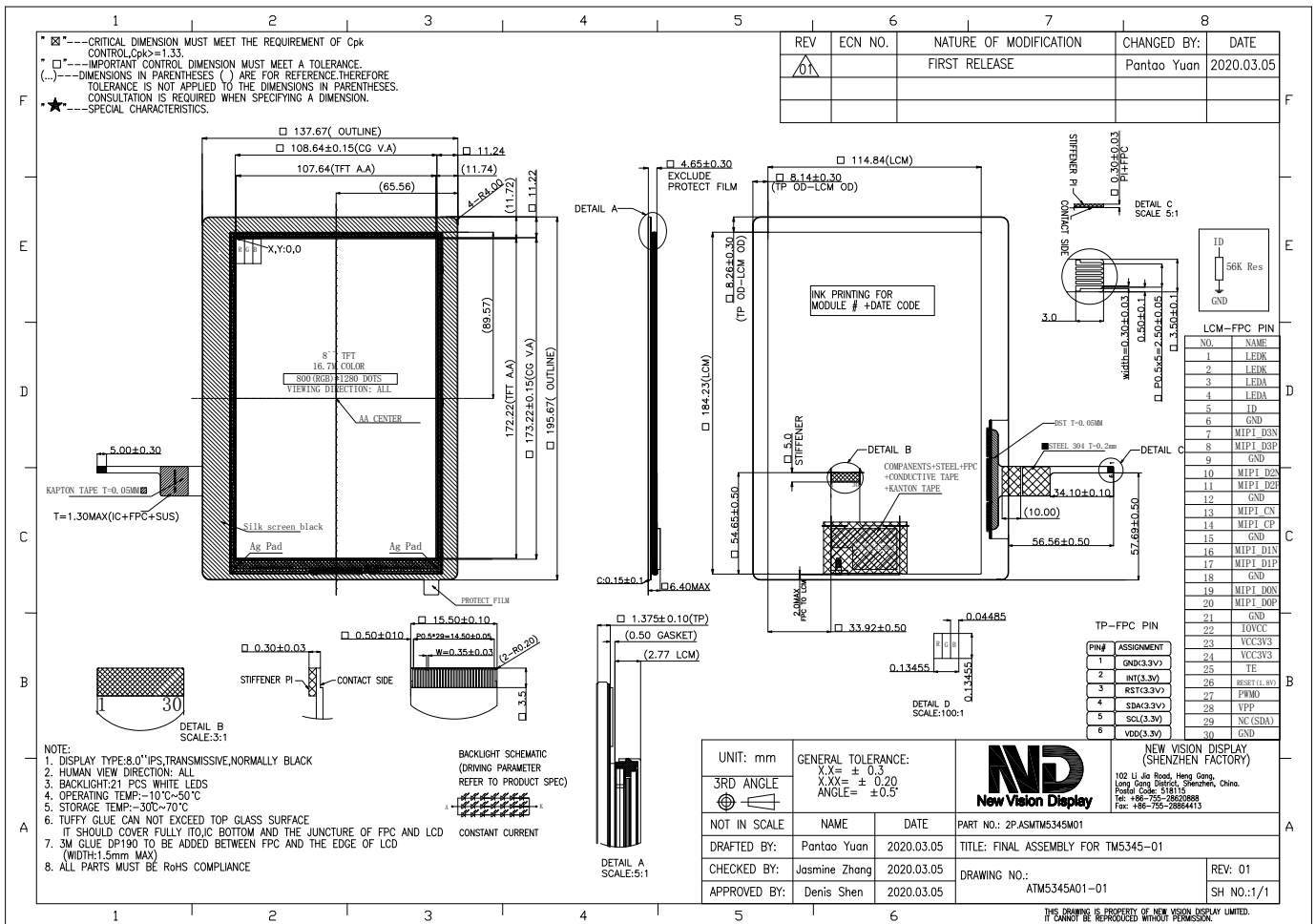


| | |
|-------------------------|---|
| Part Number | 1P.NVDS-TM5345TA080C-01 |
| Overall Dimensions | 137.67(H)x195.67(V)x4.65(T) |
| Active Area | 107.64 (H) x 172.22 (V) mm |
| Resolution | 800 RGB (H) x 1280 (V) Stripe |
| TFT Pixel Size | 0.13455 x 0.13455mm |
| Display Colors | 16.7M |
| Display Mode | IPS, Transmissive, Normally Black |
| LCD Type | a-Si TFT |
| Contrast Ratio | 1000(typ) |
| Viewing Angles (CR≥10) | 80°/80°/80°/80° (Left/Right/Top/Bottom) |
| View Direction | ALL |
| Brightness (I=60mA) | 290 cd/m ² |
| NTSC | 60% |
| TFT Driver IC | JD9365DA |
| Touch Controller | GT9271 |
| TFT Interface | MIPI 4-Data Lane |
| Touch Interface to Host | I2C |
| Touch I2C Address | 0xBA/0xBB (8Bit, Write/Read) |
| Backlight System | 21 White LEDs |
| Forward Voltage(BL) | 22.4V(typ) |
| Forward Current(BL) | 60mA (typ) |



The information contained herein is based upon typical data, New Vision Display makes no warranties expressed or implied as to its accuracy and assumes no liability arising out of its use by others. The user should determine suitability of New Vision Displays for each individual application.