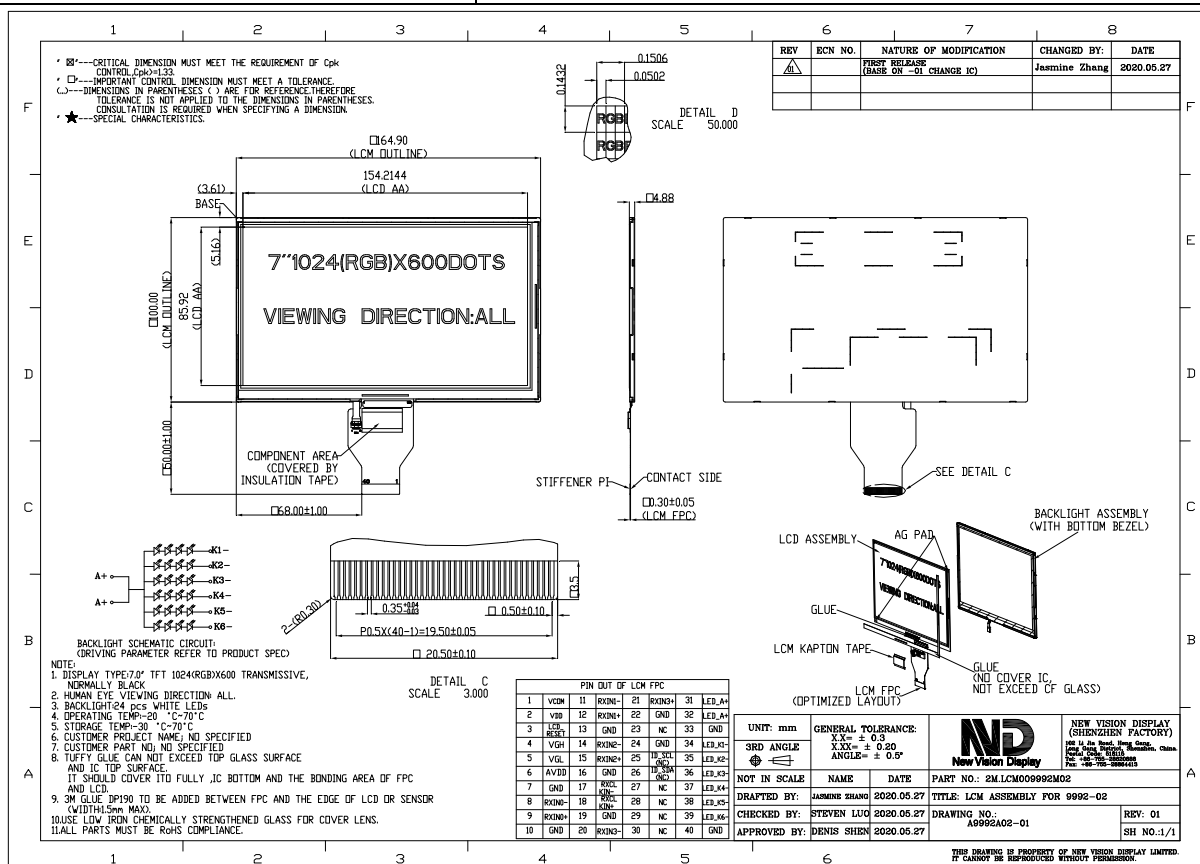


Part Number	9992DPOL070H-02
Overall Dimensions	216 (H) x 120.45(V) x 4.9(T)
Active Area	154.2144(H) x 85.92(V)
Resolution	1024 RGB (H) x 600 (V)
Pixel Size	0.1506 (H) x 0.1432(V) mm
Display Colors	16.7M
Display Mode	IPS/Transmissive /Normally Black
LCD Type	a-Si TFT
Contrast Ratio	800:1 (Typ)
Viewing Angles (CR≥10)	85°/85°/85°/85° (Left/Right/Top/Bottom)
View Direction	Viewing angle free
Brightness (I=120mA)	300cd/m <sup>2</sup> (TYP.)
NTSC	50%
Driver IC	EK79001HE (Source&TCON)+ EK73215BCGA (Gate)
AVDD	9.6V
VDD	3.3V
VGH	18V
VGL	-6.0V
VCOM	3.2V(VCOM should be adjusted to make the flicker level be minimum.)
Interface	8bits LVDS
Backlight System	24 White LED,4 in series,6 in Parallel
Forward Voltage	12.4V(typ)
Forward Current	120mA (typ)



The information contained herein is based upon typical data, New Vision Display makes no warranties expressed or implied as to its accuracy and assumes no liability arising out of its use by others. The user should determine suitability of New Vision Displays for each individual application.