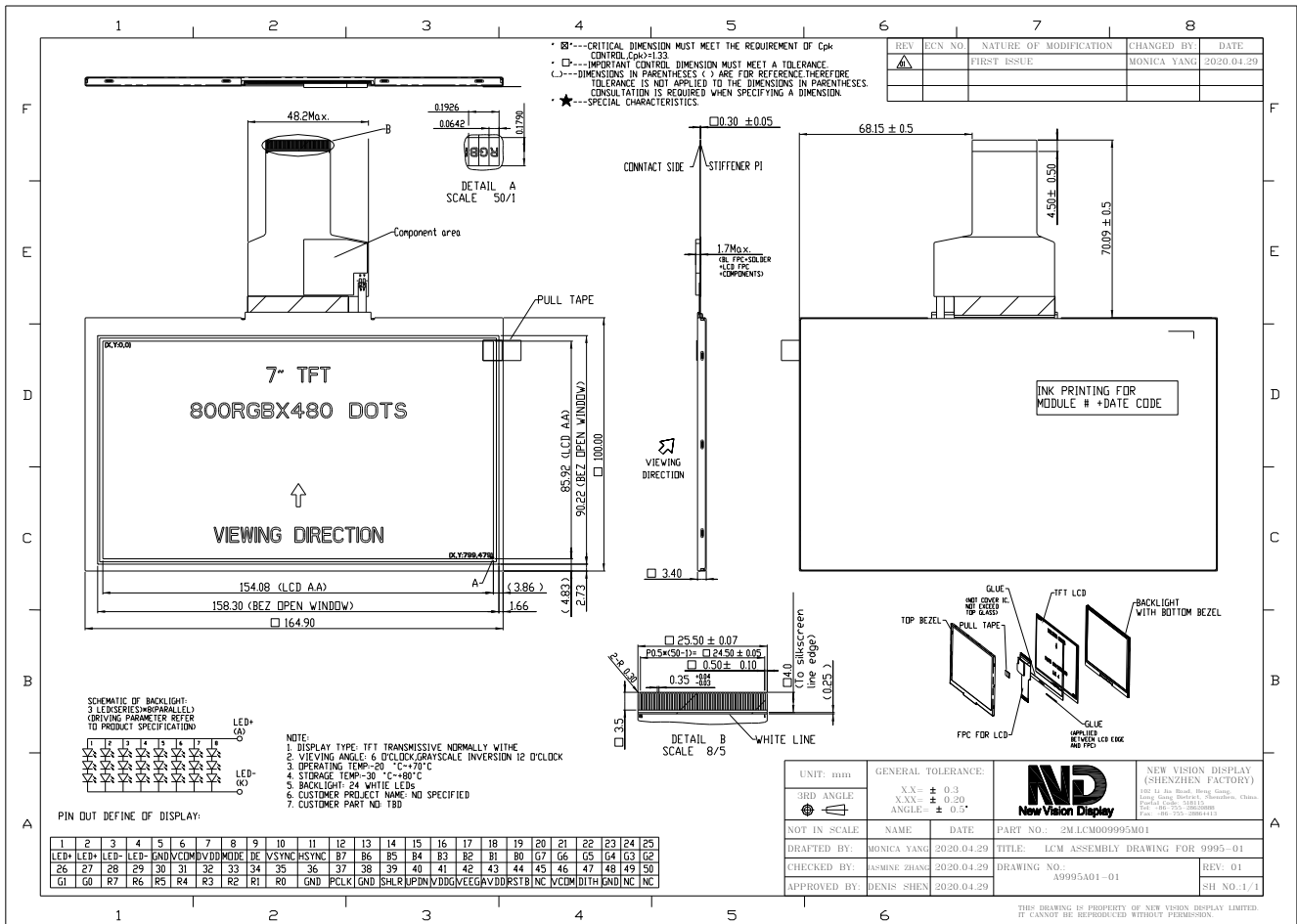


Part Number	1M.NVDI-9995DPTL070H-01
Overall Dimensions	164.90(H)x 100.00(V)x3.40(T)
Active Area	154.08(H) x 85.92(V)
Resolution	800 RGB(H) x480(V) Stripe
Pixel Size	0.1926(H) x 0.1790(V) mm
Display Colors	16.7M
Display Mode	TN, Normally White, Transmissive
LCD Type	a-Si TFT
Contrast Ratio	800:1 (typ)
Viewing Angles (CR≥10)	70°/70°/60°/70°(Left/Right/Top/Bottom)
View Direction	6 o'clock
Brightness (I <sub>f</sub> =160mA)	450 cd/m <sup>2</sup> (typ)
NTSC	TBD
Driver IC	HX8264-E(Source)+HX8664-B(Gate) or equivalent
Vdd ( Power Supply)	2.5~3.3V
Interface	24-bit RGB
Backlight System	24 White LED ,3 in series ,8 in Parallel
Forward Voltage	9.3V (typ)
Forward Current	160 mA (typ)



The information contained herein is based upon typical data, Multek Display makes no warranties expressed or implied as to its accuracy and assumes no liability arising out of its use by others. The user should determine suitability of Multek displays for each individual application.