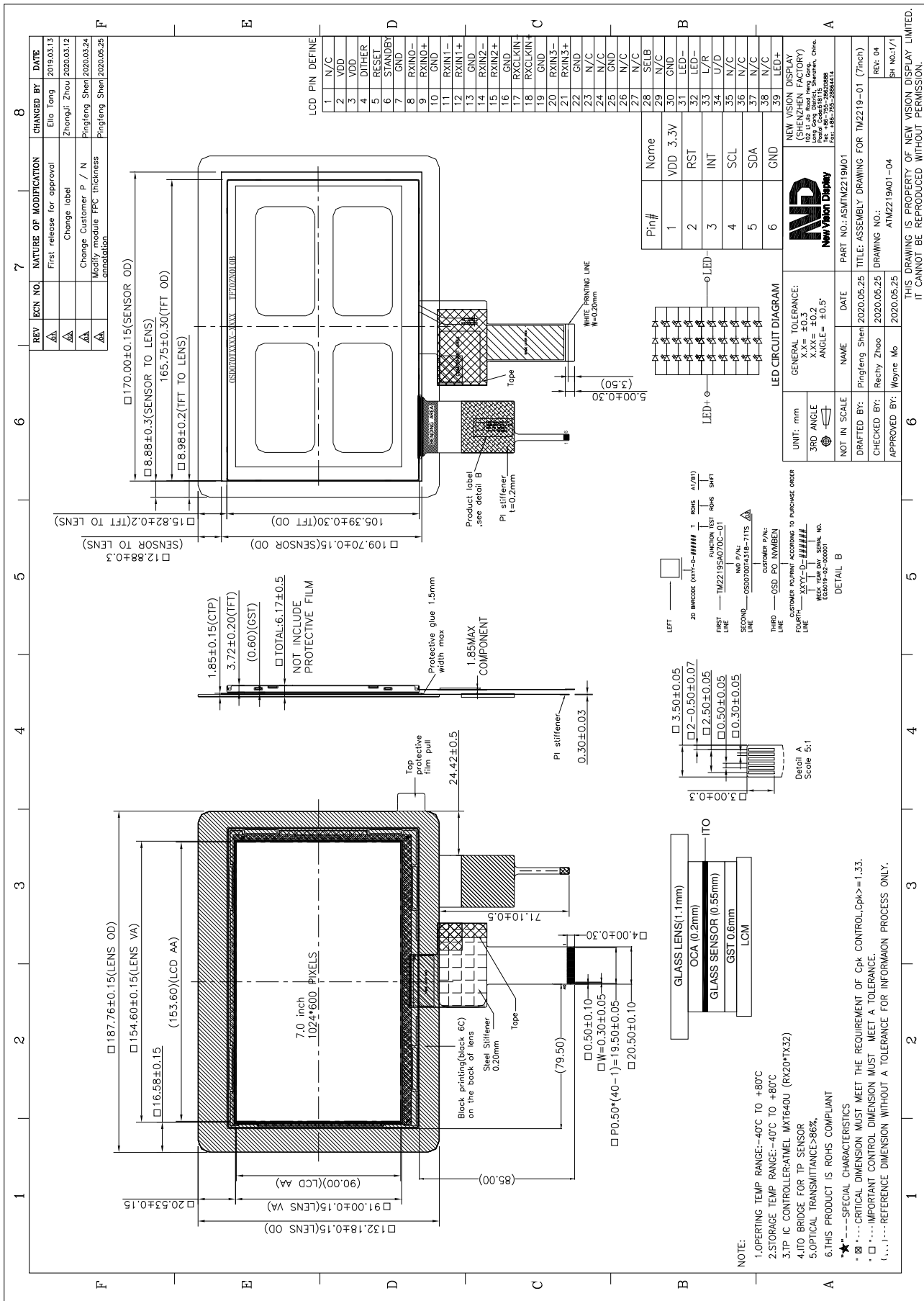


Part Number	TM2219SA070C-01
Overall Dimensions	187.76 (H) x 132.18(V) x 6.17(T)mm
Active Area	153.60 (H) x 90.00 (V) mm
Resolution	1024RGB (H) x 600 (V)
Pixel Size	0.15 (H) x 0.15(V)mm
Display Colors	16.7M
Display Mode	Transmissive/Normally White
LCD Type	a-Si TFT
Contrast Ratio	500:1 (Min)
View Direction	6 o'clock
Grayscale inversion Direction	12 o'clock
Viewing Angles (CR≥10)	Typ 70°/70°/70°/70° (Left/Right/Top/Bottom) Min 60°/60°/60°/60°(Left/Right/Top/Bottom)
Brightness (I <sub>f</sub> =20mA)	314 cd/m <sup>2</sup> (Min)
NTSC	50%(Min)
Driver IC	HX8282&HX8696 (or Equivalent)
VDD ( Power Supply)	2.5~3.6V
Interface	LVDS
Backlight System	30 White LED ,3 in series ,10 in Parallel
Forward Voltage	9.6V (typ)
Forward Current	200 mA (typ)
<b>Touch Panel Parameter</b>	
Input Method	Bare or gloved finger or thick conductive stylus
Number of simultaneous touches	10
Touch controller IC	MXT640U FW:1.0.A.A(COF)
Min. spacing between two touches	18mm
Positional Accuracy	± 1.5mm at center and ± 2.0mm at edges
Response Time / Speed	≦ 15ms
Minimum Touch Area	30mm <sup>2</sup>
Minimum Touch Pressure	0N
Optical Transmittance	>86%
I2C Address	0x4A
ESD Capability	150pF,330ohm, ±15KV, air test 150pF,330ohm, ±8KV, contact test
Interface to Host	I2C
Operating Voltage	3.3V

The information contained herein is based upon typical data, New Vision Display makes no warranties expressed or implied as to its accuracy and assumes no liability arising out of its use by others. The user should determine suitability of New Vision Displays for each individual application.



The information contained herein is based upon typical data, New Vision Display makes no warranties expressed or implied as to its accuracy and assumes no liability arising out of its use by others. The user should determine suitability of New Vision Displays for each individual application.