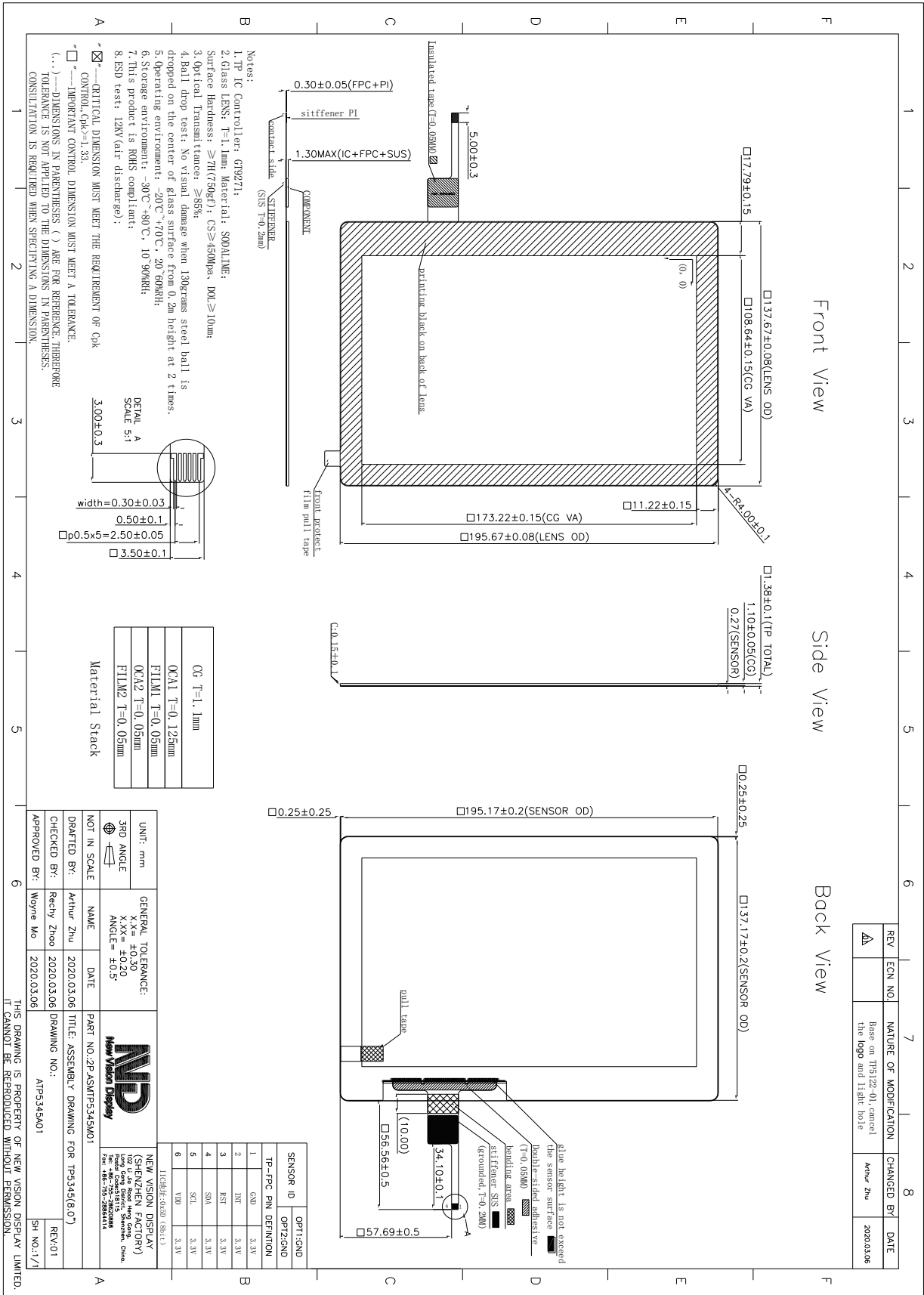


<b>TOCH PANEL SPECIFICATIONS</b>	<b>Projected Capacitive</b>	<b>FILM Substrate</b>	<b>8.0" Diagonal</b>
----------------------------------	---------------------------------	---------------------------	--------------------------

Part Number	TP5345TA080C-01
Outline Dimensions of TP sensor	137.17 (W) x 195.17 (H)mm
Overall Dimensions incl. cover lens	137.67 (W) x 195.67 (H) x 1.38 (T)mm
Active Area	109.64 (W) x 174.16 (H)mm
Input Method	Bare finger
Number of simultaneous touches	5
Min. spacing between two touches	18mm
Positional Accuracy	±2.5mm at 4 edge and ±1.5mm at center
Resolution	800 (H) x 1280(V)
Response Time / Speed	<20ms
Minimum Touch Area	30mm <sup>2</sup>
Minimum Touch Pressure	0N
Optical Transmittance	>85%
Operating temperature	-20°C to +70°C
Storage temperature	-30°C to +80°C
Life of touches	>10 million over lifetime
Surface Hardness	7H
Anti-glare surface	No
FPC attachment method	ACF bonding
FPC bending radius	1mm
Touch controller IC	GT9271
Interface to Host	I2C
I2C Address	0x5D
Operating Voltage	3.3V

The information contained herein is based upon typical data, New Vision Display makes no warranties expressed or implied as to its accuracy and assumes no liability arising out of its use by others. The user should determine suitability of New Vision Displays for each individual application.



REV	ECN NO.	NATURE OF MODIFICATION	CHANGED BY	DATE
Δ		Based on TP5122-01, cancel the logo and light hole	Arthur Zhu	2020.03.06

UNIT: mm	GENERAL TOLERANCE:	
3RD ANGLE	X, X.X = ±0.30 X, XX = ±0.20 ANGLE = ±0.5°	
NOT IN SCALE	NAME	NEW VISION DISPLAY
DRAFTED BY: Arthur Zhu	DATE: 2020.03.06	TP-FPC PH DEFINITION
CHECKED BY: Redy Zhou	TITLE: ASSEMBLY DRAWING FOR TP5345(8.0")	1 GND 3.3V
APPROVED BY: Wayne Mo	DRAWING NO.: ATP5345A01	2 INT 3.3V
		3 RST 3.3V
		4 SW 3.3V
		5 SCL 3.3V
		6 VDD 3.3V

**Notes:**

- TP IC Controller: GT9271;
- Glass LENS: T=1.1mm, Material: SODALIME;
- Surface Hardness: ≥7H(750gf); CS≥4500pa, DOI≥10mm;
- Optical Transmittance: ≥85%;
- Ball drop test: No visual damage when 130grams steel ball is dropped on the center of glass surface from 0.2m height at 2 times;
- Operating environment: -20°C~+70°C, 20%~90%RH;
- Storage environment: -30°C~+80°C, 10%~90%RH;
- This product is RoHS compliant;
- ESD test: 12KV (air discharge);

**Material Stack**

CG T=1.1mm
OCA1 T=0.125mm
FLM1 T=0.05mm
OCA2 T=0.05mm
FLM2 T=0.05mm

**DETAIL A**  
SCALE 5:1

width=0.30±0.03  
0.50±0.1  
0.50±0.05  
0.35±0.1

3.00±0.3

**CONTROL CRK=1.33**

CONTROL CRK=1.33

IMPORTANT CONTROL DIMENSION MUST MEET A TOLERANCE. DIMENSIONS IN PARENTHESES ( ) ARE FOR REFERENCE. THEREFORE TOLERANCE IS NOT APPLIED TO THE DIMENSIONS IN PARENTHESES. CONSULTATION IS REQUIRED WHEN SPECIFYING A DIMENSION.



The information contained herein is based upon typical data, New Vision Display makes no warranties expressed or implied as to its accuracy and assumes no liability arising out of its use by others. The user should determine suitability of New Vision Displays for each individual application.